

RideWay & Netscape Navigator 4.x

In order to access the Internet via RideWay, each installation of Netscape Navigator must be configured as follows.

Note: This example assumes the network IP address of the RideWay server is 192.168.1.1. If it is not, substitute the correct IP address in step 8 below.

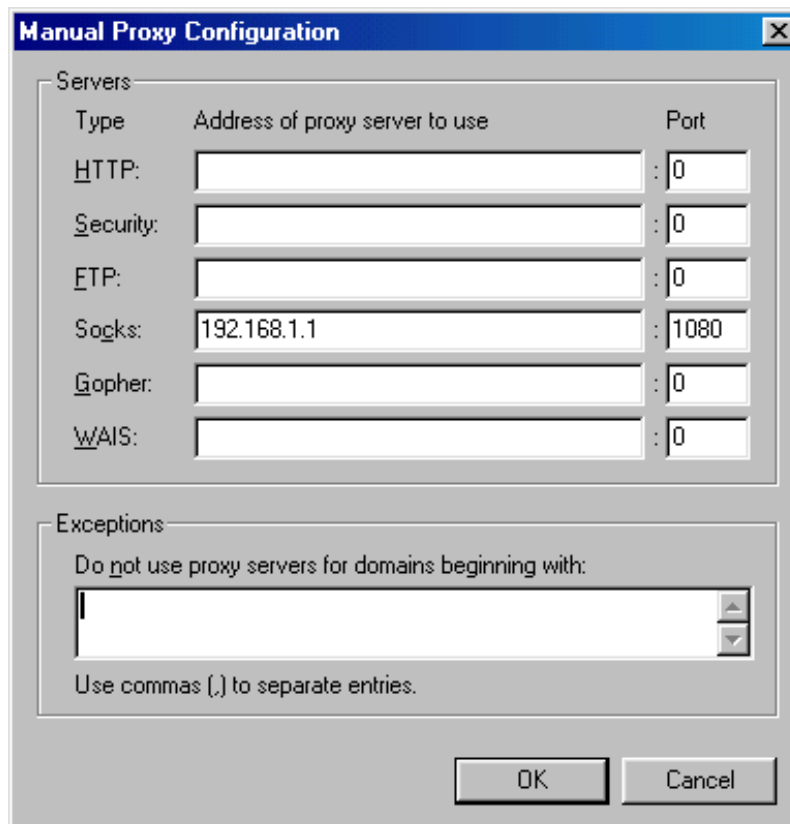
On each client PC,

1. Start **Netscape Navigator 4.x**
2. Click **Edit**
3. Click **Preferences...**
4. Double-click **Advanced**
5. Click **Proxies**
6. Click **Manual proxy configuration**
7. Click **View**

In the box to the right of the word "Socks:",

8. Type **192.168.1.1**
9. Press **[Tab]**
10. Type **1080**

Your screen should look like this:



12. Click **OK** (twice)

This client will be able to access the World Wide Web using a properly-configured RideWay or RideWay PN server.

RideWay & MS Internet Explorer 4.x

In order to access the Internet via RideWay, each installation of Internet Explorer must be configured as follows.

Note: This example assumes the network IP address of the RideWay server is 192.168.1.1. If it is not, substitute the correct IP address in step 8 below.

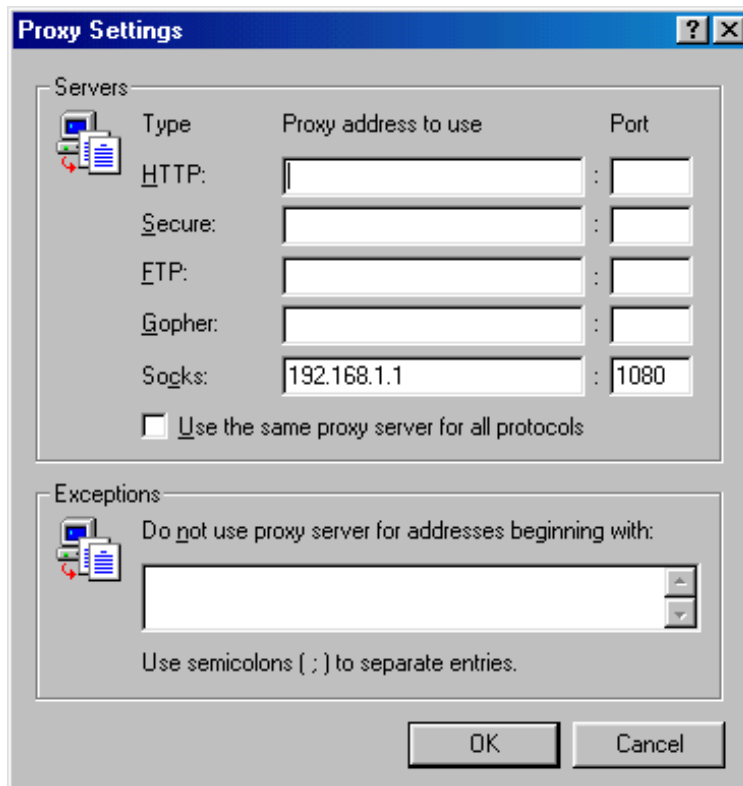
On each client PC,

1. Start **Internet Explorer 5.x**
2. Click **Tools**
3. Click **Internet Options**
4. Click **Connection**
5. Click **LAN Settings**
6. Check **Use a proxy server**
7. Click **Advanced**

In the box to the right of the word "Socks:",

8. Type **192.168.1.1**
9. Press **[Tab]**
10. Type **1080**

Your screen should look like this:



12. Click **OK** (three times)

This client will be able to access the World Wide Web using a properly-configured RideWay or RideWay PN server.

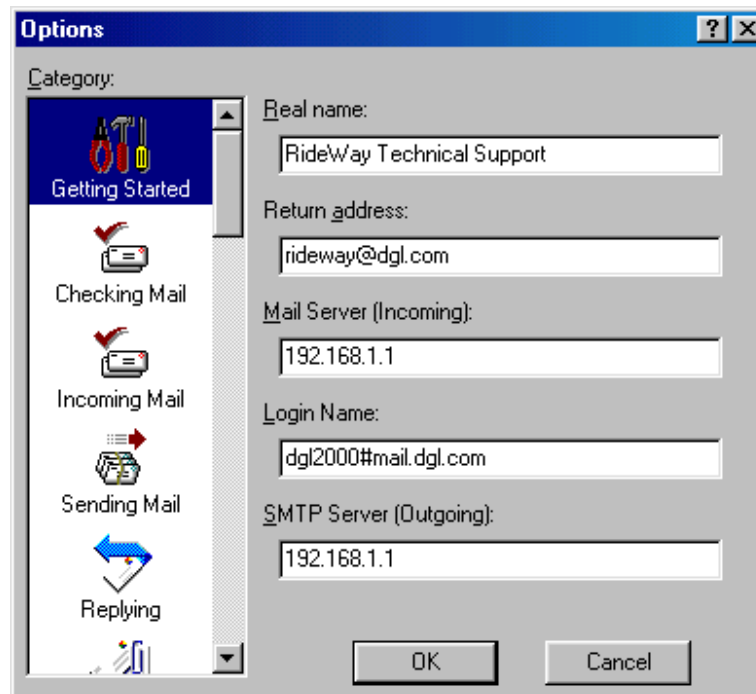
In order to access Internet email via RideWay, each installation of Eudora Pro must be configured as follows.

Note: This example assumes the network IP address of the RideWay server is 192.168.1.1. If it is not, substitute the correct IP address in steps 10 and 14 below.

On each client PC,

1. Start **Eudora Pro**
2. Click **Tools**
3. Click **Options**
4. Click **Getting Started**
5. Click **“inside the “Real name” dialog box”**
6. Type **“your real name”** (i.e. RideWay Technical Support or Dave Murphy)
7. Press **[Tab]**
8. Type **“your return email address”** (i.e. rideway@dgl.com or tom@itserv.com)
9. Press **[Tab]**
10. Type **192.168.1.1**
11. Press **[Tab]**
12. Type **“email mailbox#POP3 server”** (i.e. dgl2000#mail.dgl.com or tzinzi#smtp.itserv.com)
13. Press **[Tab]**
14. Type **192.168.1.1**

Your screen should look like this:



15. Click **OK**

This client will be able to access the POP3 email services using a properly-configured RideWay or RideWay PN server.

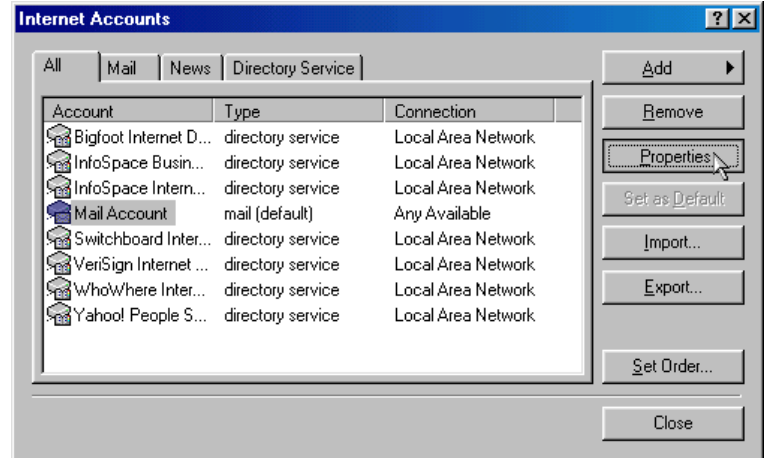
RideWay & Outlook Express 5.x

In order to access Internet email via RideWay, each installation of Outlook Express must be configured as follows.

Note: This example assumes the network IP address of the RideWay server is 192.168.1.1. If it is not, substitute the correct IP address in steps 7 and 9 below.

On each client PC,

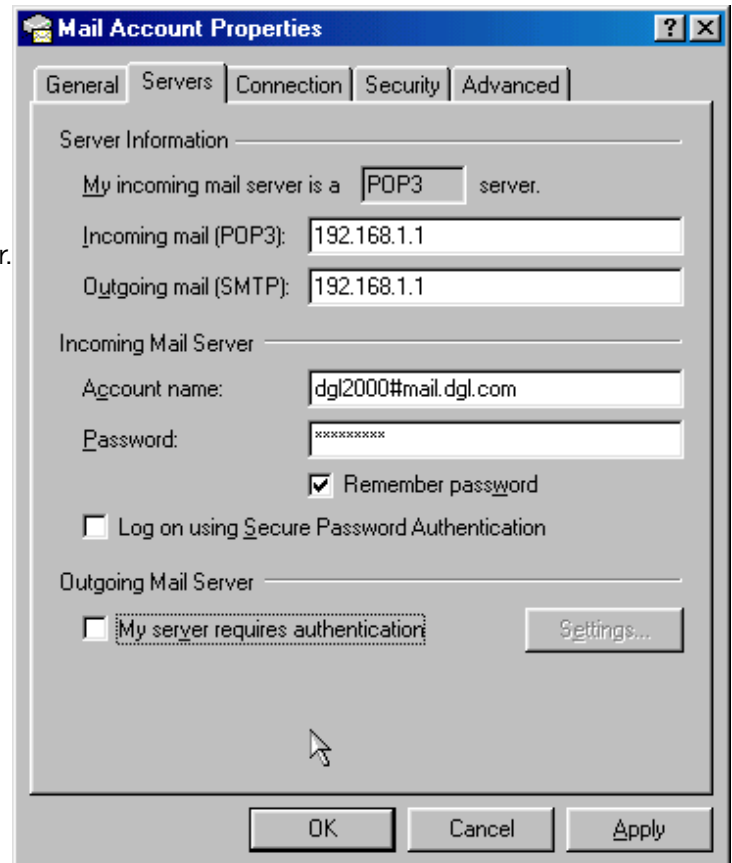
1. Start **Outlook Express**
2. Click **Tools**
3. Click **Accounts**
4. Click **“your Internet email account”**
5. Click **Properties**
6. Click **Servers**



In the Incoming mail (POP3): dialog window,

7. Type **192.168.1.1**
8. Press **[Tab]**
9. Type **192.168.1.1**
10. Press **[Tab]**
11. Type **“email mailbox#POP3 server”** (i.e. dgl2000#mail.dgl.com or tzinzi#smtp.itserv.com)
12. Press **[Tab]**
13. Type **“your mailbox password”**
14. Check **Remember Password**
15. Click **OK**
16. Click **Close**

This client will be able to access the POP3 email services using a properly-configured RideWay or RideWay PN server.

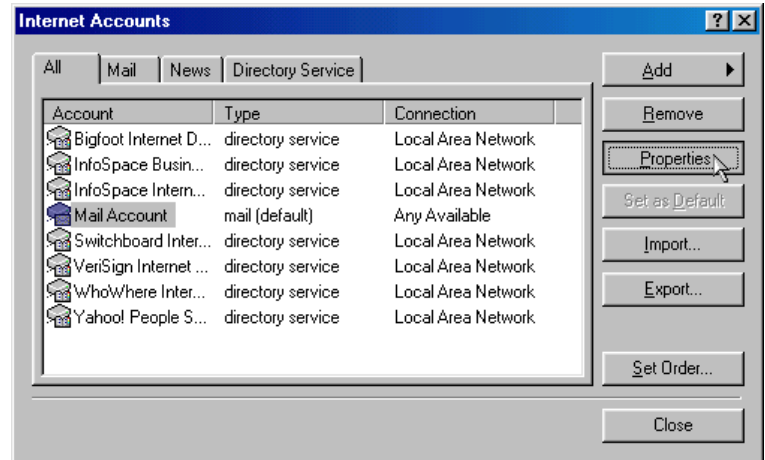


In order to access Internet email via RideWay, each installation of Outlook 2000 must be configured as follows.

Note: This example assumes the network IP address of the RideWay server is 192.168.1.1. If it is not, substitute the correct IP address in steps 7 and 9 below.

On each client PC,

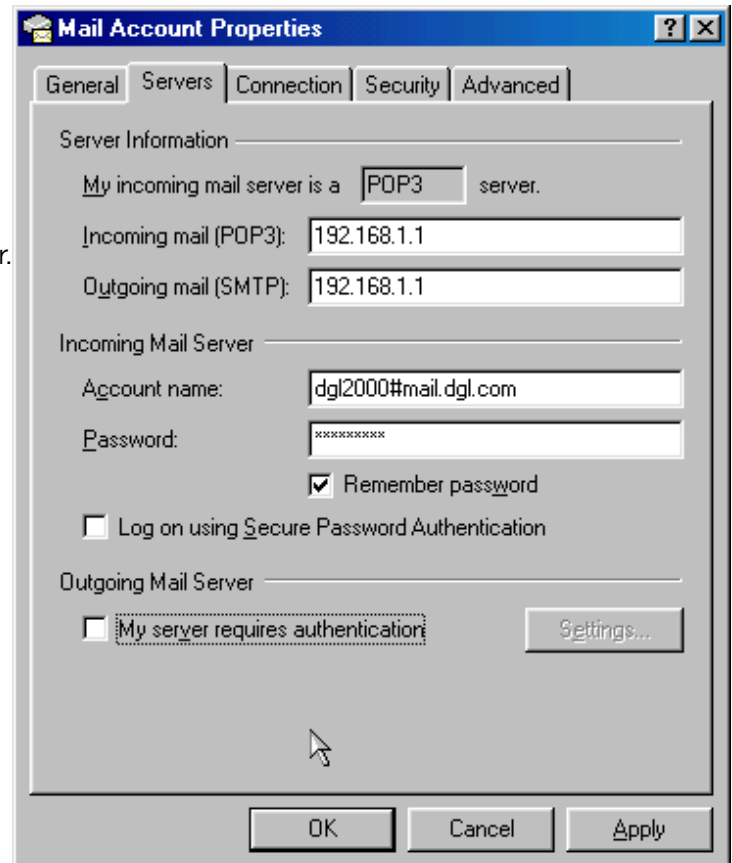
1. Start **Outlook 2000**
2. Click **Tools**
3. Click **Accounts**
4. Click **“your Internet email account”**
5. Click **Properties**
6. Click **Servers**



In the Incoming mail (POP3): dialog window,

7. Type **192.168.1.1**
8. Press **[Tab]**
9. Type **192.168.1.1**
10. Press **[Tab]**
11. Type **“email mailbox#POP3 server”** (i.e. dgl2000#mail.dgl.com or tzinzi#smtp.itserv.com)
12. Press **[Tab]**
13. Type **“your mailbox password”**
14. Check **Remember Password**
15. Click **OK**
16. Click **Close**

This client will be able to access the POP3 email services using a properly-configured RideWay or RideWay PN server.



In order to access Internet FTP (File Transfer Protocol) services via RideWay, each installation of WS_FTP Pro must be configured as follows.

Note: This example assumes the network IP address of the RideWay server is 192.168.1.1. If it is not, substitute the correct IP address in step 4 below.

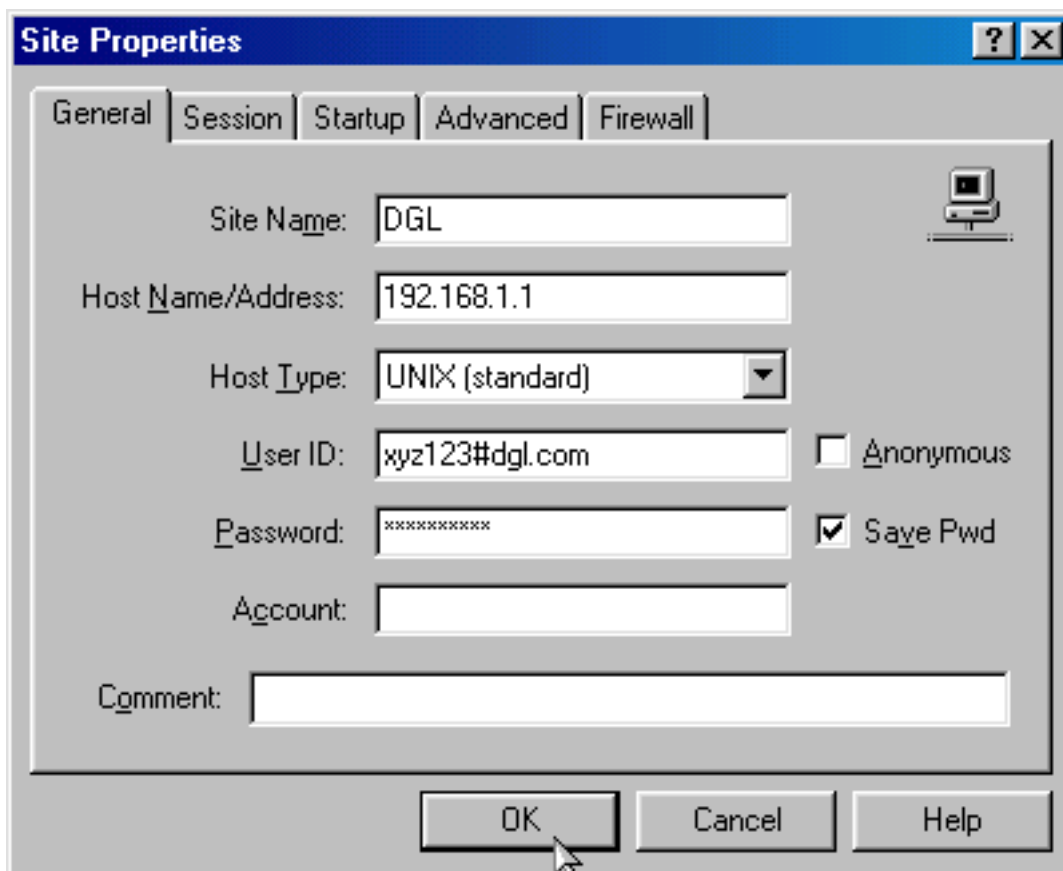
On each client PC,

1. Start **WS_FTP Pro**
2. Click **“the FTP account to be modified”**
3. Click **Properties**

In the Host Name/Address dialog,

4. Type **192.168.1.1**
5. Press **[Tab]** (twice)
6. Type **“login name#ftp server”** (i.e. xyz123#dgl.com or emp99#www.itserv.com)
7. Press **[Tab]**
8. Type **“the password associated with this login name”**
9. Check **Save Pwd** (Save “Remember” Password)

Your screen should look like this:



10. Click **OK**

This client will be able to access the FTP services using a properly-configured RideWay or RideWay PN server.

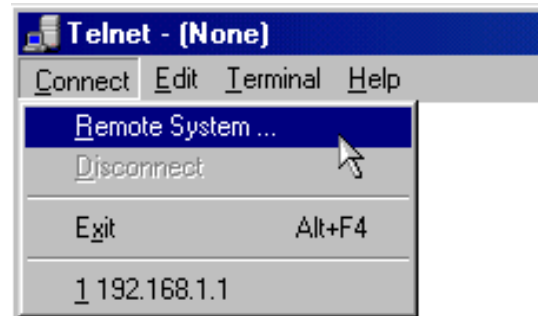
RideWay & Windows Telnet

In order to access Internet Telnet services via RideWay, each installation of Windows Telnet must be configured as follows.

Note: This example assumes the network IP address of the RideWay server is 192.168.1.1. If it is not, substitute the correct IP address in step 7 below.

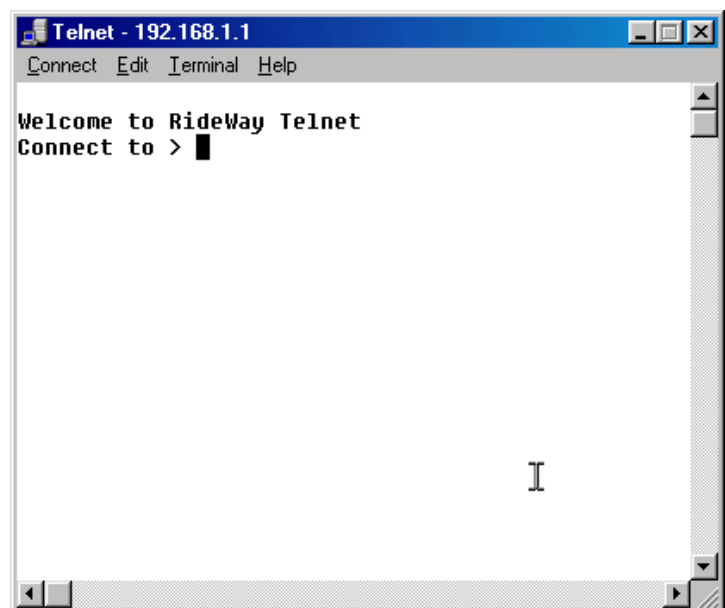
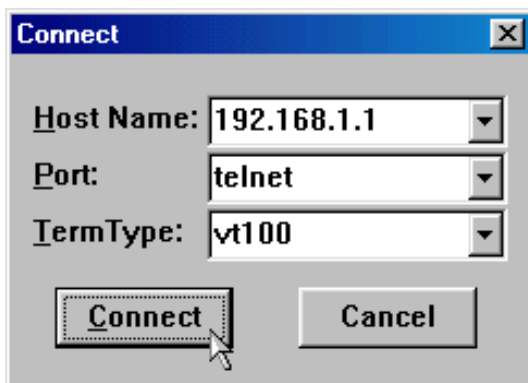
On each client PC,

1. Click **Start**
2. Click **Run**
3. Type **TELNET**
4. Click **OK**
5. Click **Connect**
6. Click **Remote System**



In the Host Name dialog,

7. Type **192.168.1.1**
8. Click **Connect**



9. Type **"the IP address or Telnet server name of the system you wish to access"**
10. Press **[Enter]**

This client will be able to access the Telnet services using a properly-configured RideWay or RideWay PN server.

In order to access ICQ services via RideWay, each installation of ICQ must be configured as follows.

Note: This example assumes the network IP address of the RideWay server is 192.168.1.1. If it is not, substitute the correct IP address in steps 11 and 15 below.

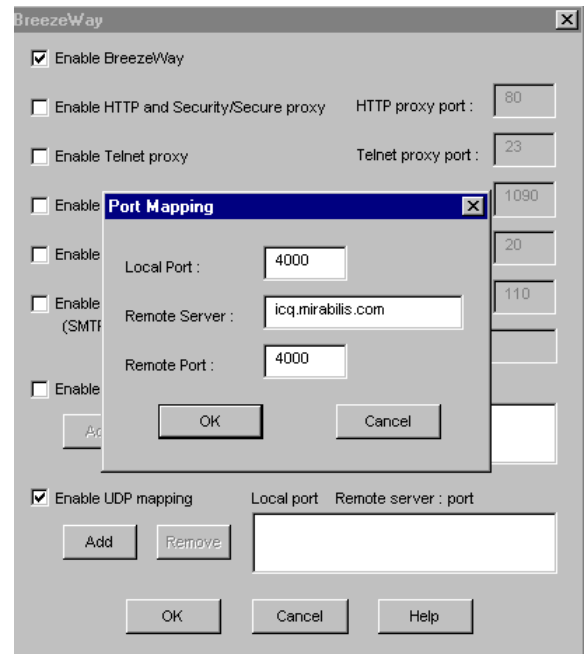
To configure RideWay to support ICQ:

On the RideWay Server,

1. Click **the "B" Breezeway tool** (on the RideWay toolbar)
2. Check **Enable UDP mapping**
3. Click **Add** (UDP mapping)

In the Local Port dialog,

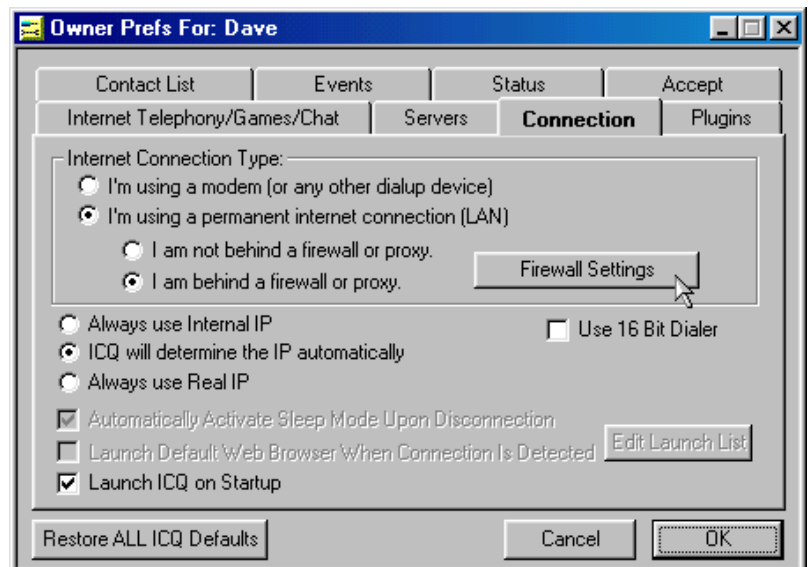
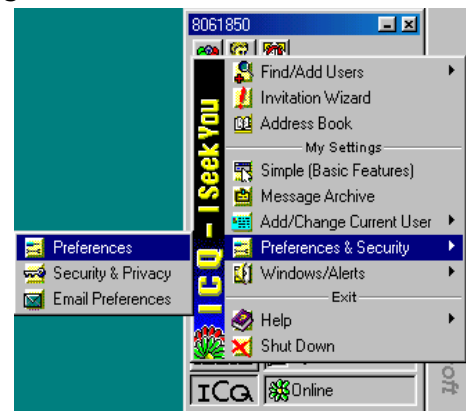
4. Type **4000**
5. Press **[Tab]**
6. Type **icq.mirabilis.com**
7. Press **[Tab]**
8. Type **4000**
9. Click **OK** (twice)



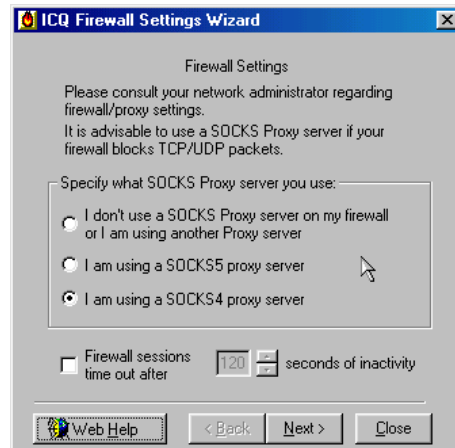
This RideWay server is now configured to proxy ICQ traffic from the properly-configured client workstations.

On each client PC,

1. Double-Click **ICQ icon in system bar**
2. Click **ICQ**
3. Click **Preferences & Security**
4. Click **Preferences**
5. Click **Connection**
6. Click **I'm using a permanent Internet connection (LAN)**
7. Click **I'm behind a firewall or proxy**
8. Click **Firewall Settings**



- 9. Click **I am using a SOCKS 4 proxy server**
- 10. Click **Next**

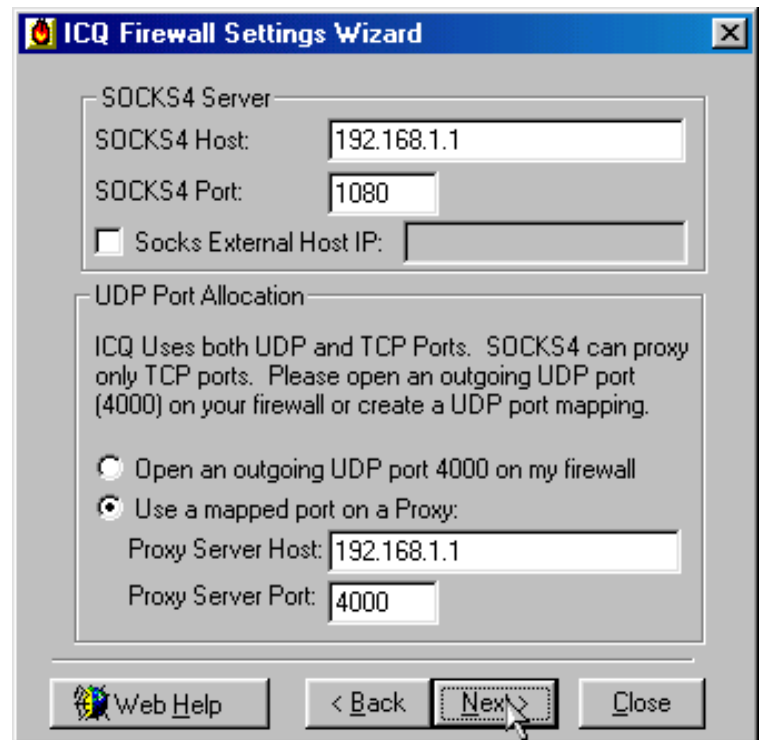


In the SOCKS 4 Host dialog,

- 11. Type **192.168.1.1**
- 12. Press **[Tab]**
- 13. Type **1080**
- 14. Click **Used a mapped port on a Proxy**

In the Proxy Server Host dialog,

- 15. Type **192.168.1.1**
- 16. Press **[Tab]**
- 17. Type **4000**
- 18. Click **Next**
- 19. Click **Done**
- 20. Click **OK** (twice)



This client will be able to access the Telnet services using a properly-configured RideWay or RideWay PN server.

In order to access RealAudio services via RideWay, each installation of RealPlayer must be configured as follows.

Note: This example assumes the network IP address of the RideWay server is 192.168.1.1. If it is not, substitute the correct IP address in steps 5 and 8 below.

To configure RideWay to support RealPlayer:

On each client PC,

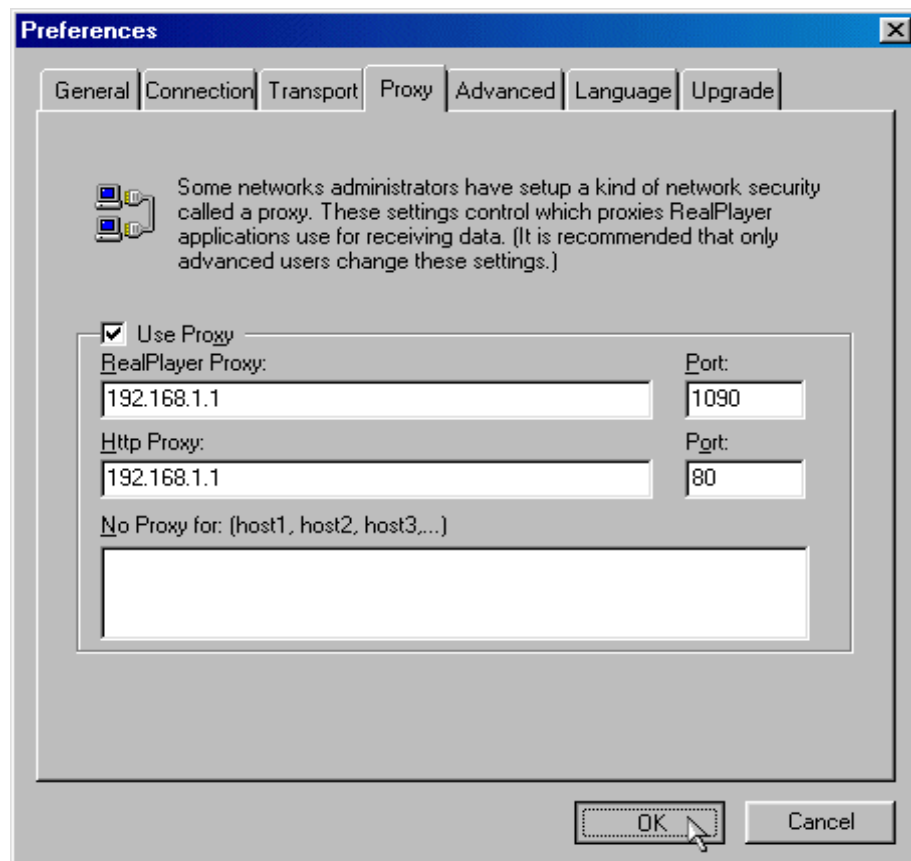
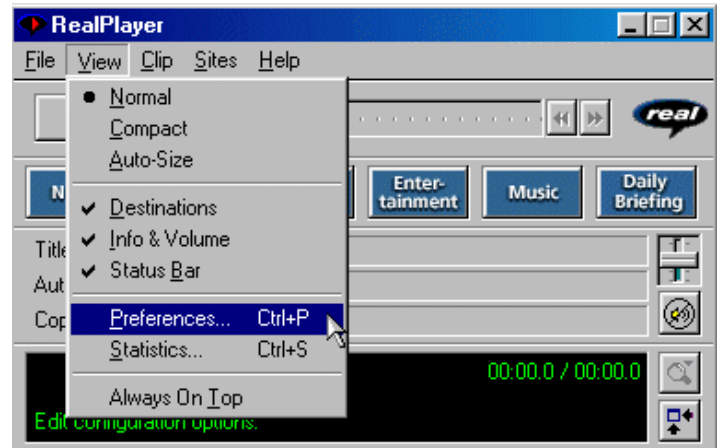
1. Start **RealPlayer**
2. Click **View**
3. Click **Preferences**
4. Check **Use Proxy**

In the RealPlayer Proxy dialog,

5. Type **192.168.1.1**
6. Press **[Tab]**
7. Type **1090**

In the Http Proxy dialog,

8. Type **192.168.1.1**
9. Press **[Tab]**
10. Type **80**



11. Click **OK**

This client will be able to access the RealAudio services using a properly-configured RideWay or RideWay PN server.

In order to access RealAudio services via RideWay, each installation of RealPlayer G2 must be configured as follows.

Note: This example assumes the network IP address of the RideWay server is 192.168.1.1. If it is not, substitute the correct IP address in steps 5 and 9 below.

To configure RideWay to support RealPlayer G2:

On each client PC,

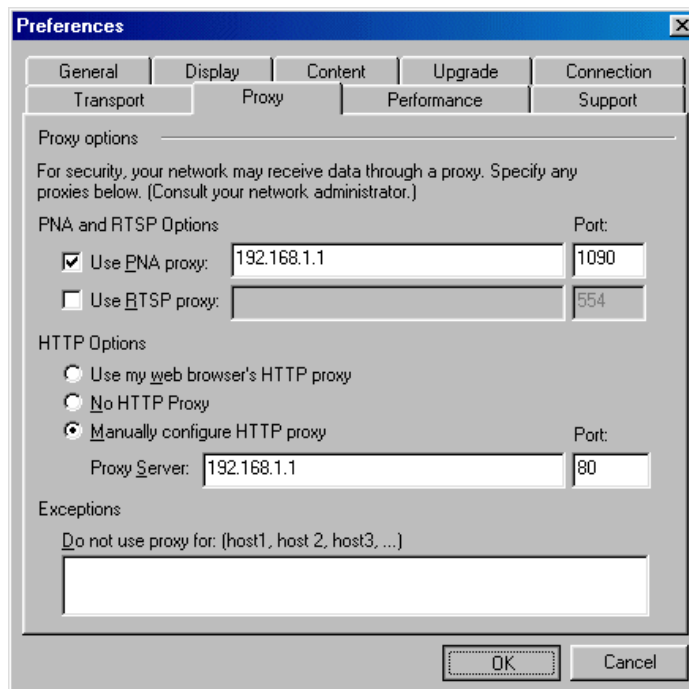
1. Start **RealPlayer G2**
2. Click **Options**
3. Click **Preferences**
4. Check **Use PNA proxy**

In the Use PNA Proxy dialog,

5. Type **192.168.1.1**
6. Press **[Tab]**
7. Type **1090**
8. Check **Manually configure HTTP proxy**

In the Proxy Server dialog,

9. Type **192.168.1.1**
10. Press **[Tab]**
11. Type **80**



12. Click **OK**

This client will be able to access the RealAudio services using a properly-configured RideWay or RideWay PN server.